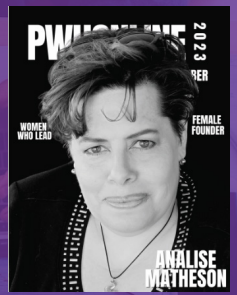


Business Engagement Specialist Services

BY RUBICON EXECUTIVE ASSISTANCE



ABOUT BUSINESS ENGAGEMENT SPECIALIST SERVICES

At Rubicon BES (Business Empowerment Specialists), we focus on empowering small-to-medium sized enterprises, startups, and non-profit organizations to reach their full potential through a comprehensive suite of services tailored to enhance operational efficiency, market presence, and strategic growth. Our dedicated team leverages industry-leading insights and innovative solutions to address the unique challenges and opportunities each client faces.

From strategic marketing and sales support to advanced content creation, event management, and management support services, we ensure every aspect of your business is aligned for success. Specializing in organizational support services, we're committed to facilitating streamlined operations and strategic advancements. As a proud woman-owned and operated business, Rubicon BES embodies a commitment to diversity, equity, and empowerment in the business world, positioning us as your partner in achieving long-term success and transformative growth.

CORE COMPETENCIES

Maximizing your business's capabilities, we intricately handle the nuances, freeing you to concentrate on crucial matters.

MARKETING AND SALES SUPPORT

Increase your brand with our marketing and sales support, enhancing your materials to connect deeply with your audience and boost your sales.

CONTENT CREATION AND TUTORIAL DEVELOPMENT

We create compelling, educational content tailored to your audience's needs, using multimedia expertise to produce top-notch visuals that engage and inform.

EVENT MANAGEMENT AND NETWORKING FACILITATION

Our expert event management services pave the way for impactful networking and learning opportunities, building stronger business communities and connections.

STRATEGIC ASSESSMENTS AND BUSINESS ANALYSIS

Dive deep into market trends and business insights with our strategic analysis, unlocking growth opportunities and crafting pathways to success.

SOLUTION MAPPING AND AUTOMATION

Streamline your operations with customized tech solutions like CRM and QuickBooks, designed to boost efficiency and seamlessly integrate with your business.

TRAVEL MANAGEMENT AND ADMINISTRATIVE SERVICES

Ensure seamless business operations with our travel management and administrative services, offering meticulous logistics and scheduling for hassle-free management.

FEATURED CLIENTS



AnaLise Matheson

 (435) 632-9259

 www.rubiconbes.com

